



maGic
MID-ATLANTIC GIGABIT INNOVATION COLLABORATORY





maGic
MID-ATLANTIC GIGABIT INNOVATION COLLABORATORY

DEMONSTRATED NEED



- MAIN STREET AMERICA IS IN DISREPAIR, NET NEGATIVE JOB GROWTH
- TRANSPORTATION GAPS AND PARKING INFRASTRUCTURE CREATING DISENGAGEMENT
- NO BASELINE DATA TO INFORM DECISION-MAKING
- LOCAL WORKFORCES ARE COMMUTING 60-90 MIN AWAY
- ECONOMIC LOSSES LEADING TO ADDICTION, CRIME, TRUANCY & POOR HEALTH OUTCOMES
- AT EVEN GREATER RISK IN PERIODS OF RECESSION AND PANDEMICS!



magic
MID-ATLANTIC GIGABIT INNOVATION COLLABORATORY

PROJECT OBJECTIVES

‘SILICON MAIN STREET’



- LEVERAGE OUR GIGABIT FIBER NETWORK
- REVERSE FLOW OF COMMUTERS, RETENTION OF ‘GEN Z’, NET POSITIVE JOB GROWTH
- CREATE ‘SANDBOX’ INFRASTRUCTURE FOR TECHNOLOGY & INNOVATION
- MAKE CITY MORE RESILIENT TO RECESSIONS AND PANDEMICS



POTENTIAL UTILIZERS

STUDENT TRANSPORTATION:



ACCESSIBILITY & SPECIAL NEEDS TRANSPORTATION:



AUTONOMOUS DELIVERY:



UTILITY & SAFETY DISPATCH / WORKFORCE TRANSPORTATION:





HIGH LEVEL PROJECT SCHEDULE

Phase 1:

- Ribbon Cutting Event to launch route scanning vehicle - May 20th, 2-6 pm
- Aerial scanning - Aug '21
- Virtual Simulation Video - Sept '21
- Assessment and Vehicle recommendations by - Oct '21

Phase 2:

- Purchase vehicle, wireless equipment, select garage location(s), develop SAVI Students - Nov '21 - May '22
- Single vehicle deployment and wireless testing - Nov '21 - Sept '22

Phase 3:

- Purchase additional vehicles, complete wireless network, expand program - Oct '22 - Sept '23



PHASE 1 RESEARCH QUESTIONS

How many vehicles will be needed to serve population given 10-15 minute availability and arrival times?

What is the market opportunity for virtual tolls and digital twin licensing?

What are the grid resiliency (Net Metering) benefits from a fleet of EVs?

What is the opportunity for Technology Tourism?

How will our autonomous solutions impact transit equity compared to existing solutions?

Best practices for surveying our various communities: LatinX, Seniors, Students, etc.



magic
MID-ATLANTIC GIGABIT INNOVATION COLLABORATORY

PHASE 1 RIBBON CUTTING SUCCESS!



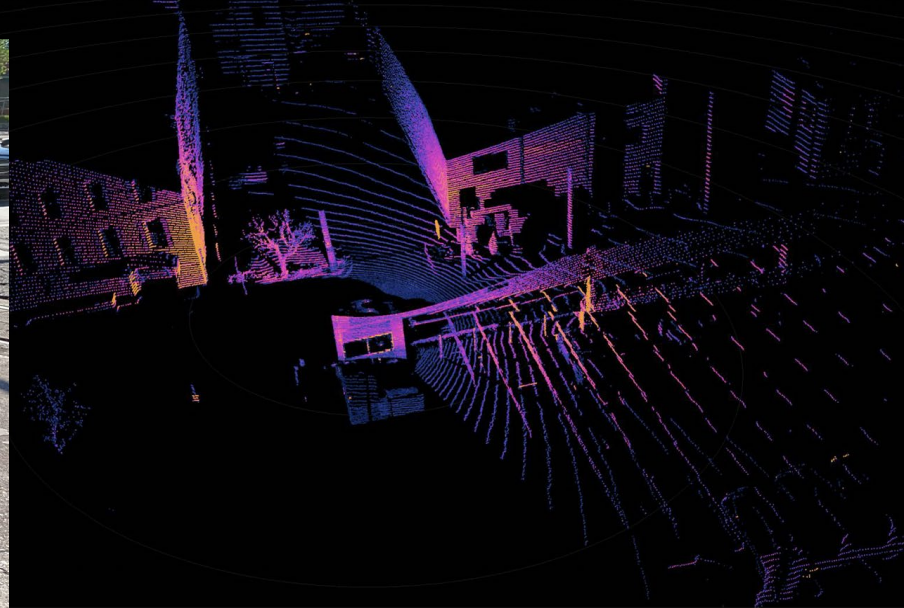
<http://www.youtube.com/watch?v=OdIcmCQ10cc>



magic
MID-ATLANTIC GIGABIT INNOVATION COLLABORATORY

GROUND LIDAR SCANNING IN PROGRESS

DDT
Dynamic Dimension
Technologies





magic
MID-ATLANTIC GIGABIT INNOVATION COLLABORATORY

AERIAL SCANNING IS NEXT



Civil Air Patrol
U.S. Air Force Auxiliary





magic
MID-ATLANTIC GIGABIT INNOVATION COLLABORATORY

The logo for MAGIC (Mid-Atlantic Gigabit Innovation Collaboratory) features the word "magic" in a lowercase, purple, sans-serif font. The letter "G" is stylized as a square with a white outline and a purple fill, containing a white circular graphic that resembles a signal or a stylized 'G'. Below the name, the full name "MID-ATLANTIC GIGABIT INNOVATION COLLABORATORY" is written in a smaller, purple, uppercase, sans-serif font.