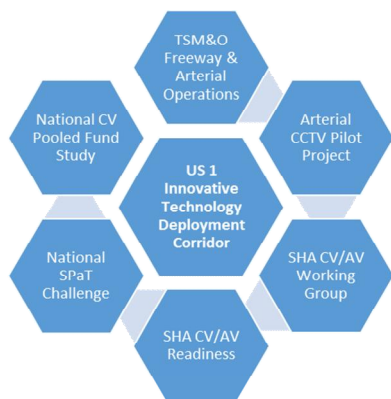


US 1 Innovative Technology Deployment Corridor

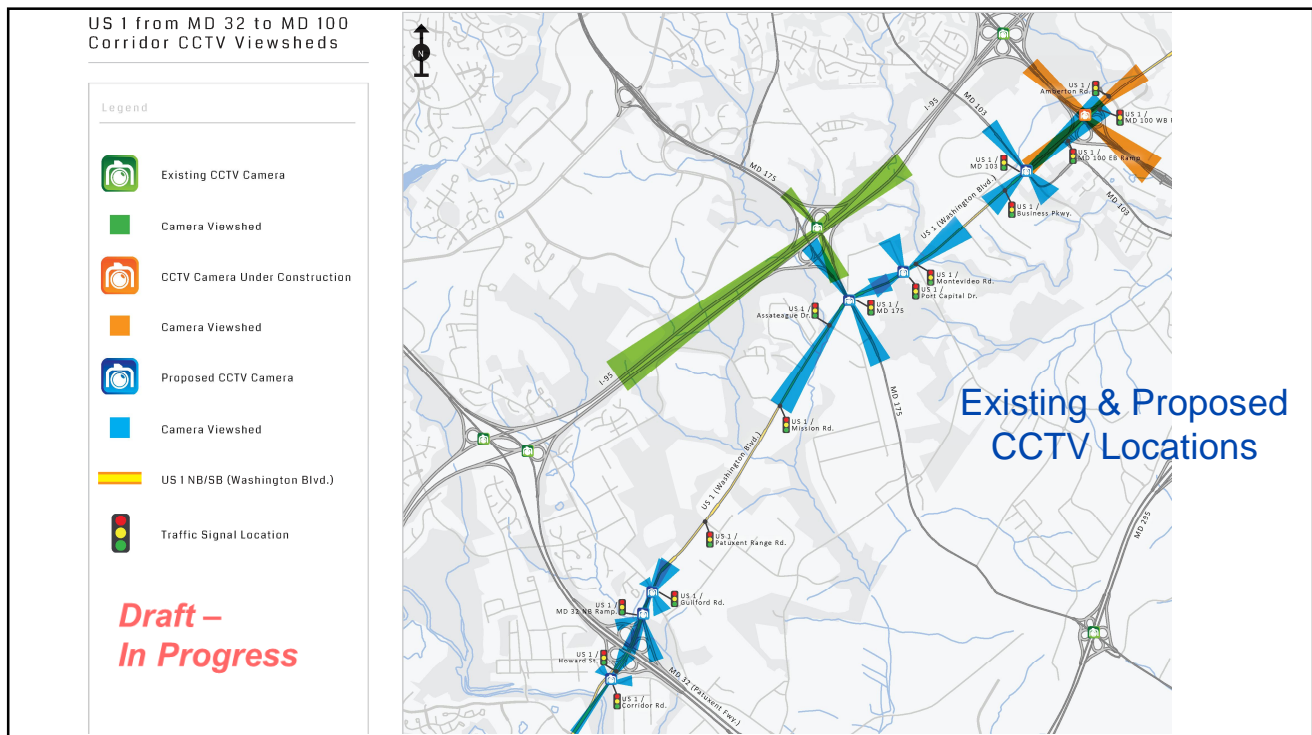
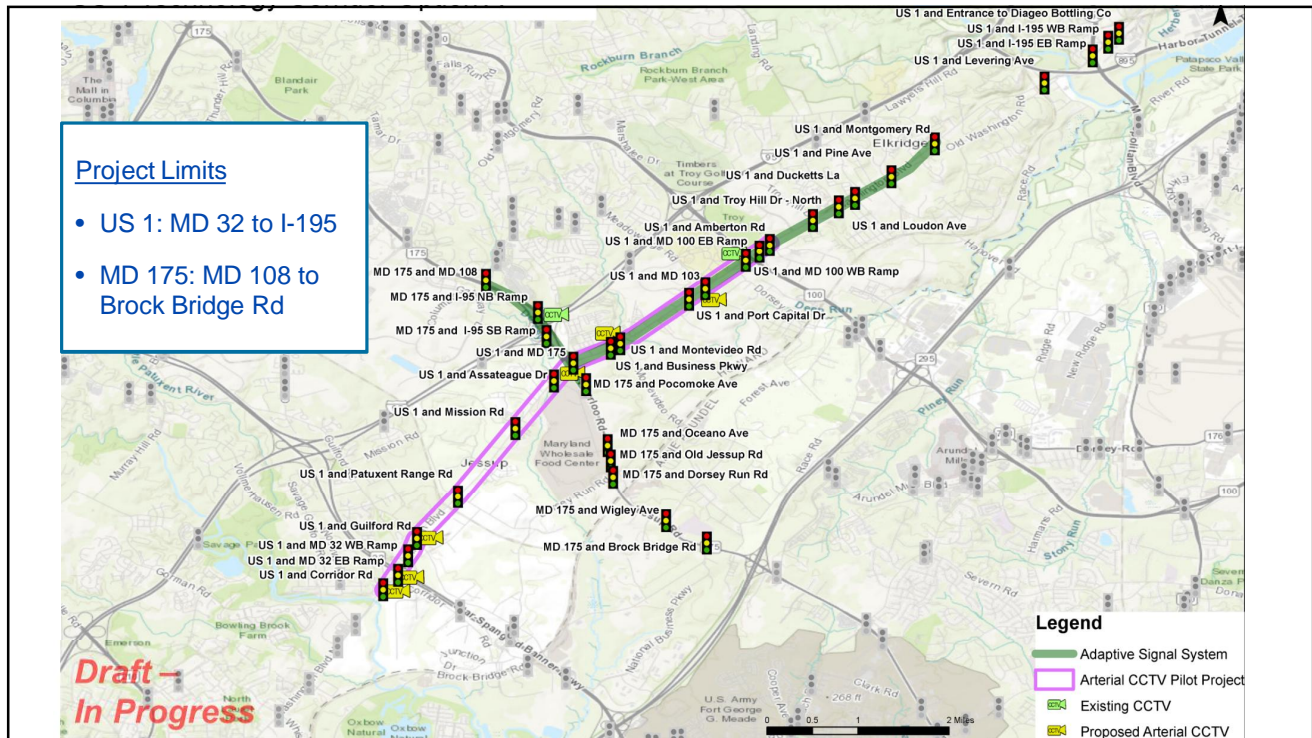
Update August 2017

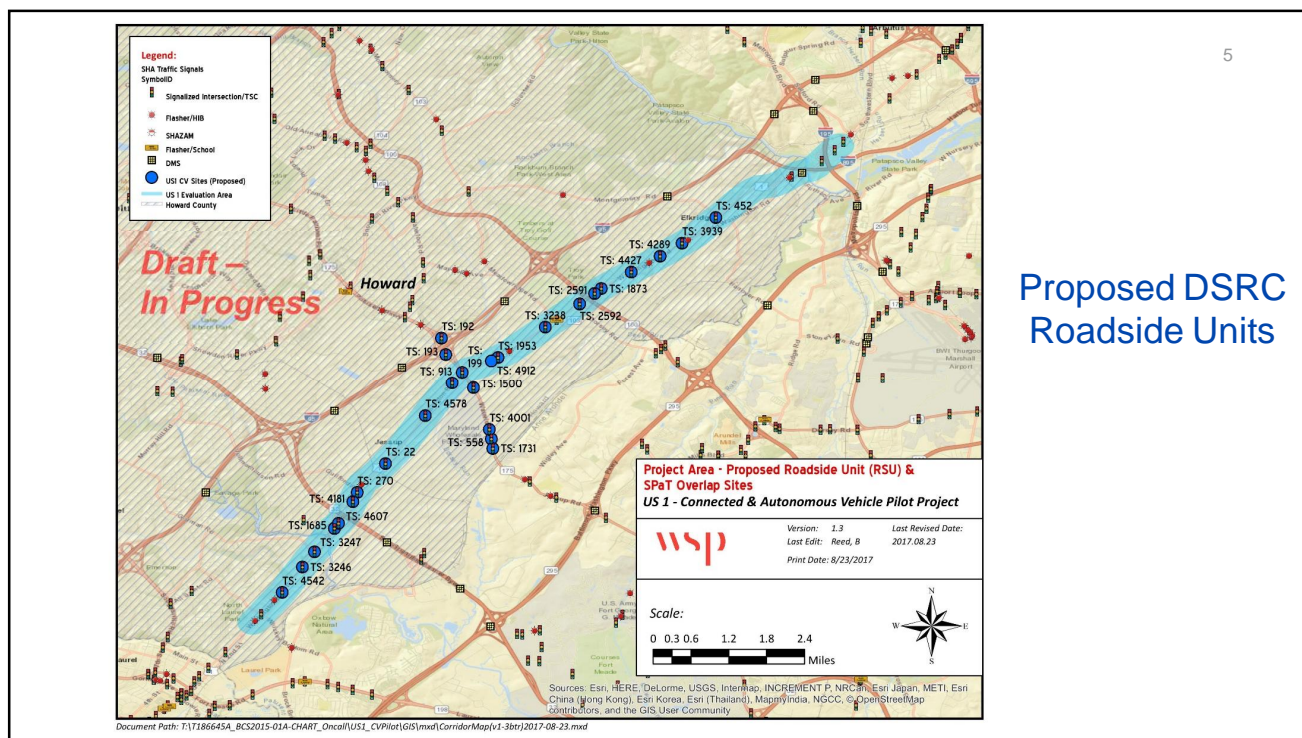
MOT MARYLAND DEPARTMENT OF TRANSPORTATION
STATE HIGHWAY ADMINISTRATION

US 1 Innovative Technology Deployment Corridor



- Arterial **CCTV** to support incident and traffic management
- **Detection** to support arterial travel times
- Upgraded **signal controllers** to support better timing and future CV applications
- **DSRC deployment** at intersections in support of National SPaT Challenge
- Enhanced high-bandwidth **communication** connectivity to support future needs
- Additional **tools** (arterial DMS, localized RWIS deployment, etc)





SCOPING EFFORT FOR US 1 PILOT PROGRAM

- Complete** → **Field Review** - cabinets, communications, current equipment specs, etc.
- In Progress** → **Communications/Network Architecture** - build a high level logical architecture that accommodates current and future needs
- In Progress** → **Design Elements** - include specs for some of the equipment, network/communication design, logical and physical architecture
- In Progress** → **Implementation Elements** - operations & maintenance, cost estimate/assessment, risk/benefit matrix
- Planned** → **Phased Schedule** - break the effort into manageable chunks and address the relative needs/outcomes of each phase

US 1 Deployment - General Schedule

- **Summer/Fall 2017** - Requirements & Planning
- **Winter 2017** – Design & Advertisement
- **Spring/Summer 2018** – Construction, Integration, & Completion

